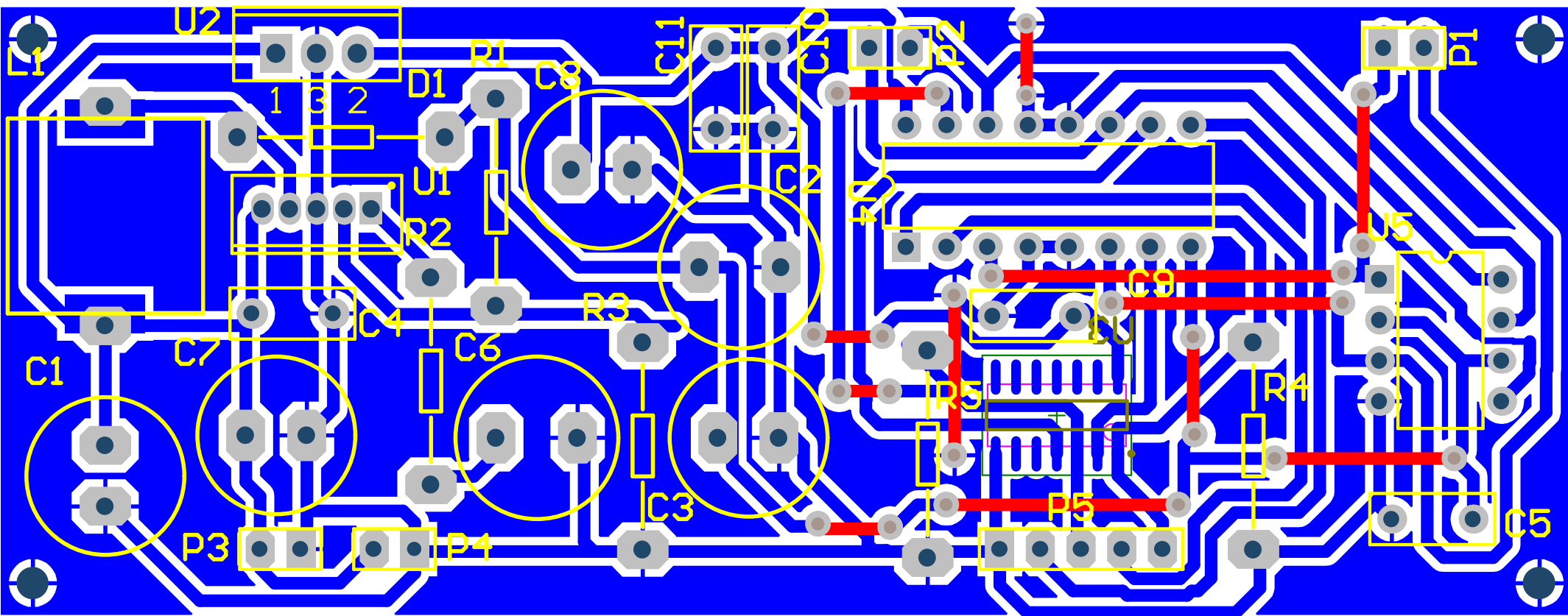


Title		
Carte moteur : 2 Moteurs; Consigne: Vitesse & Direction		
Size	Number	Revision
A4		
Date:	15/07/2012	Sheet of
File:	C:\Users\...\SchemaDrive.SchDoc	Drawn By: Benjamin / roboticus.org



# Bill of Materials

<Parameter Title not found>

Source Data From: Motor Drive.PrjPCB  
 Project: Motor Drive.PrjPCB  
 Variant: None

Creation Date: 15/07/2012 18:00:40  
 Print Date: 41105 41105.75051  
 \_\_\_\_\_

Footprint	Comment	LibRef	Designator	Description	Quantity
CapDia8mmPinSpacing 3.8mm	Cap Pol 47uF	Cap Pol1	C1, C7	Polarized Capacitor (Radial) 47uF	2
CapDia10mmPinSpacing 5.08mm	Cap Pol 330uF	Cap Pol1	C2	Polarized Capacitor (Radial) 330uF	1
CapDia8mmPinSpacing 3.8mm	Cap Pol 220uF	Cap Pol1	C3, C8	Polarized Capacitor (Radial) 220uF	2
CAPR5.08-7.8x3.2	Cap 100nF	Cap	C4, C9, C10, C11	Capacitor 100nF	4
CAPR5.08-7.8x3.2	Cap	Cap	C5	Capacitor 100nF	1
CapDia10mmPinSpacing 5.08mm	Cap Pol 4.7uF	Cap Pol1	C6	Polarized Capacitor (Radial) 4.7uF	1
Resistorandother	D Schottky	D Schottky	D1	Schottky Diode	1
Self12mm	Inductor	Inductor	L1	Inductor 100uH 1.2A	1
HDR1X2	Header 2	Header 2	P1, P2, P3, P4	Header, 2-Pin	4
HDR1X5	Header 5	Header 5	P5	Header, 5-Pin	1
Resistorandother	Res 10k	Res1	R1	Resistor 10K	1
Resistorandother	Res 1k	Res1	R2, R3, R4, R5	Resistor 1k	4
T05A	LM2577T-ADJ	LM2577T-ADJ	U1	SIMPLE SWITCHER; Step-Up Voltage Regulator	1
ISOWATT220AB	L7805CP	L7805CP	U2	Positive Voltage Regulator	1
D014_N	SN74HCT14D	SN74HCT14D	U3	Hex Schmitt-Trigger Inverter	1
DIP16	L293D	L293D	U4	Push-Pull Four Channel Driver With Diode	1
DIP8	UC2610N	UC2610N	U5	IC Schottky diode bridge 8-dip	1
					28

Approved	Notes

